

A

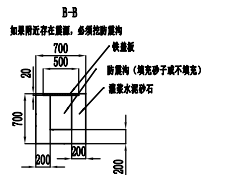
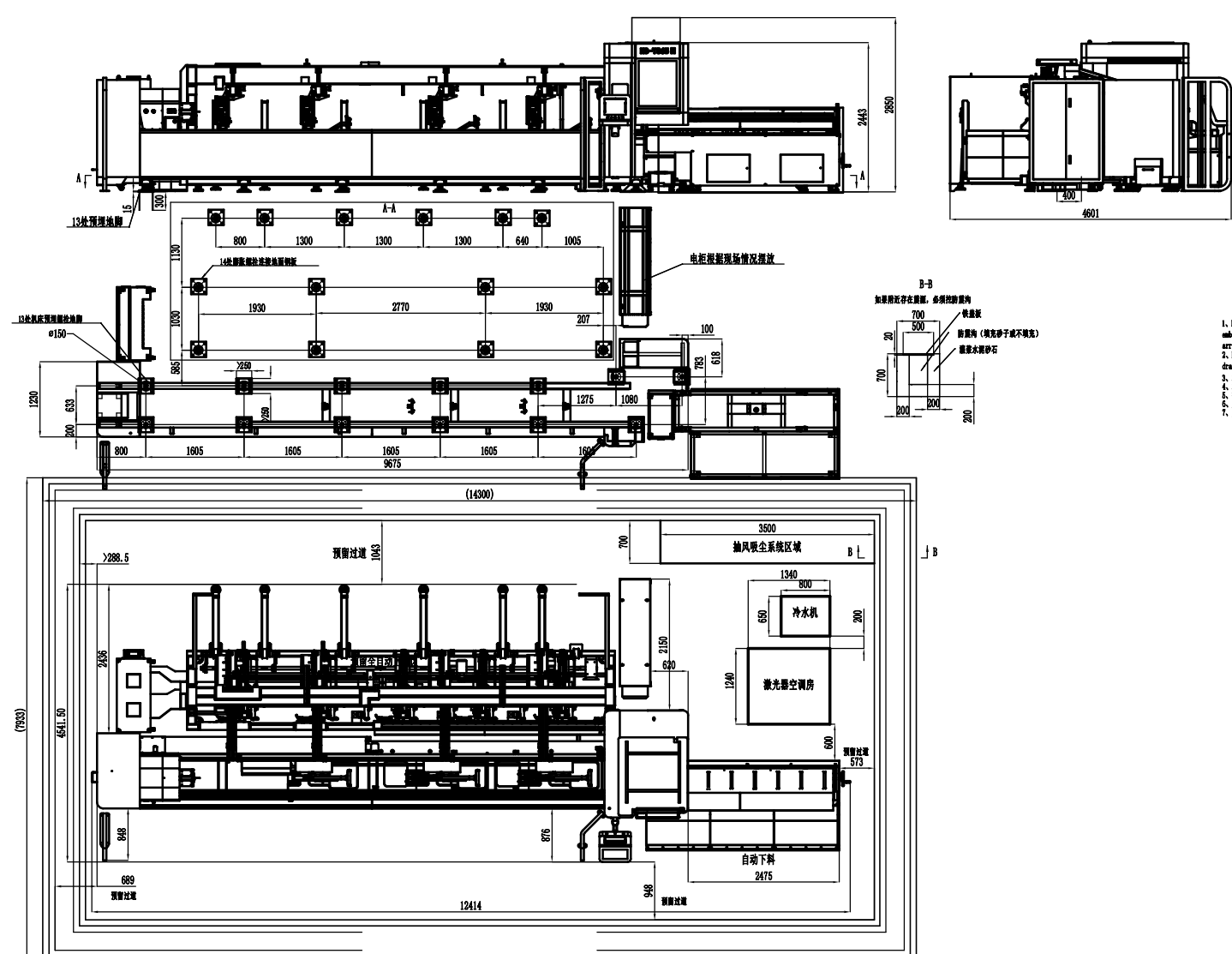
B

C

D

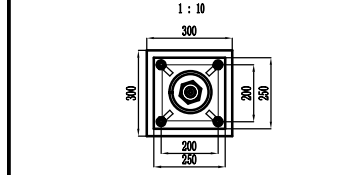
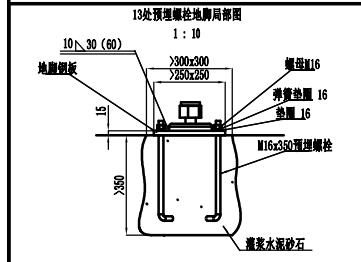
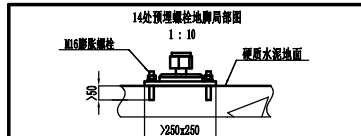
E

F



Machine installation

1. Embedded foundation of 400x200mm size bed shall be embedded with 13 M16x350 embedded bolts and grouting according to A-A view size 20 days before the engine arrives at the factory.
2. Fix the foundation steel plate with embedded bolts as required in the drawing one day before the machine tool arrives at factory.
3. Machine body is placed on the foundation according to the drawing.
4. After the machine tool is placed, the leveling should be carried out.
5. After the leveling is completed, the grouting should be carried out.
6. After the grouting is completed, the leveling should be carried out again.
7. After the leveling is completed, the grouting should be carried out again.



Technical Requirement

1. The foundation must be poured with C25 reinforced concrete, and each anchor of the main engine is embedded with hook steel plate.
2. The bed part and laser shall not be less than 1 m away from the wall or other obstacles.
3. The chiller is placed in a well ventilated place (such as by the window), and all auxiliary equipment can be arranged according to the actual situation, and the diagram is for reference only.

内得使用 严禁翻版



				HSG LASER CO., LTD.	
				Foundation map	
				TS65	
SIGN	CHANGE CONTENT	AUTOGRAPH	DATE	PROPORTION	1:40
DESIGN	麦裕强 2019/6/5	EXAMINE		WEIGHT	12943.917 kg
PROOFREADING		APPROVAL			