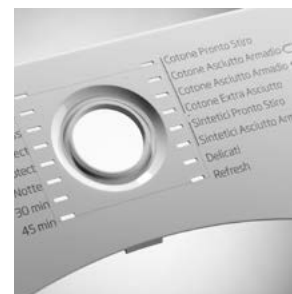
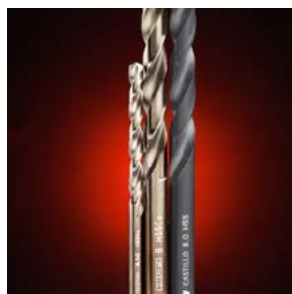
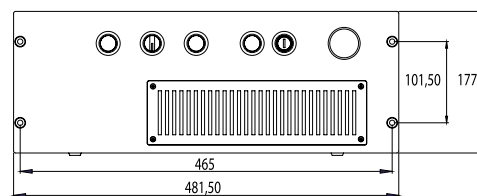
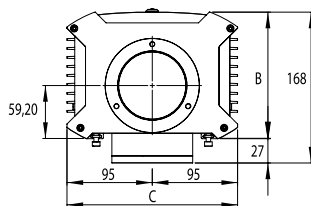
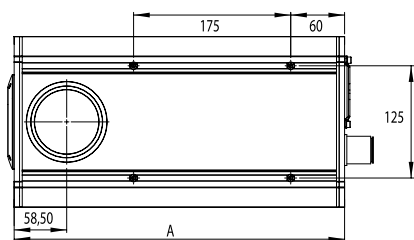


# AB - D SERIES

SHORT PULSE WIDTH LASERS TO MINIMISE THERMAL IMPACT ON DELICATE SUBSTRATES



# AB - SERIES



System		AB-D 06	AB-D 10	AB-D 20
Average Power		6w	10w	20w
Wavelength		1064nm		
Pulse width		4-40 ns		
Frequency range		10-100 KHz		
Power requirement		120 . 240VAC 50/60 Hz Typ: 250VA Max: 300VA	120 . 240VAC 50/60 Hz Typ: 250VA Max: 300VA	120 . 240VAC 50/60 Hz Typ: 350VA Max: 400VA
Dimensions	Head (L x W x H)	601x 190 x 141mm		
	Rack			
Weight		33kg		
Cooling				
Alignment diode		Red pointer diode fitted as standard		
Software (Optional)		<ul style="list-style-type: none"> <li>• Abmarca label design software. Requires MS Windows V.7 or higher</li> <li>• AbOptima supervisory software</li> <li>• Abvision control software for vision systems</li> </ul>		
Control System		<ul style="list-style-type: none"> <li>• Dual Processor CPU with 3 axis control and opto-isolated Digital I/O</li> </ul>		
Interface options		<ul style="list-style-type: none"> <li>• Touchscreen</li> <li>• PC/Laptop</li> </ul>		
Environmental Conditions		<ul style="list-style-type: none"> <li>• +15°C to 40°C ambient temperature</li> <li>• Humidity &lt; 95% non-condensing</li> </ul>		
Accessories		<ul style="list-style-type: none"> <li>• Focus finder diode</li> <li>• Rotary axis</li> <li>• Extraction equipment</li> <li>• Class I workstations (Abstation range)</li> </ul>		

Focal length (mm)	Marking area (mm)	Working distance (mm)	Spot diameter (µm)	Power Density (kW/cm <sup>2</sup> )	Power Density (kW/cm <sup>2</sup> )	Power Density (kW/cm <sup>2</sup> )
100	55x55	128	27	2081	3468.8	6937.6
162	100x100	205	44	793	1321.7	2643.5
254	160x160	321	69	323	537.7	1075.3
346	212x212	427	94	174	289.8	579.5